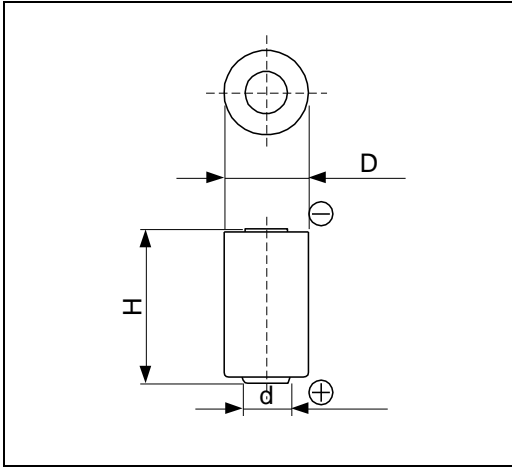


Cell Type CR14250SE Specifications



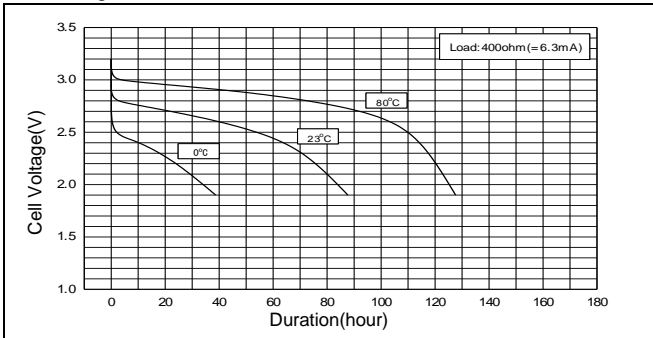
Nominal Voltage (V)		3
Nominal Capacity (mAh) *1		850
Standard Discharge Current (mA)		0.5
Operating Temperature Range (°C) *2		-40 ~ +85
Max. Dimensions (mm)	Diameter (D)	14.5
	Height (H)	25.0
Approx. Weight (g)		9

*1 Nominal capacity is determined at an end voltage of 2.0V when the battery is allowed to discharge at a standard current level at +23°C.

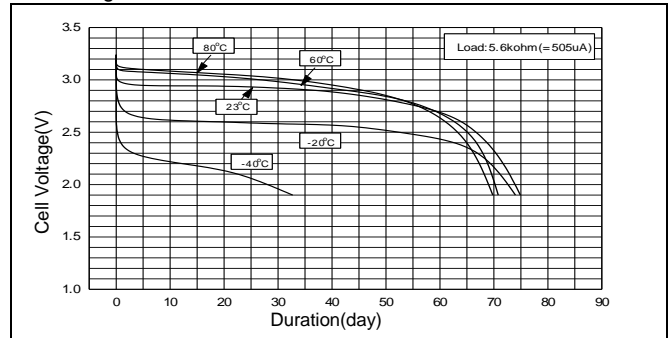
*2 Consult FDK when using batteries at temperatures exceeding the -20°C to +60°C range.

Typical Characteristics

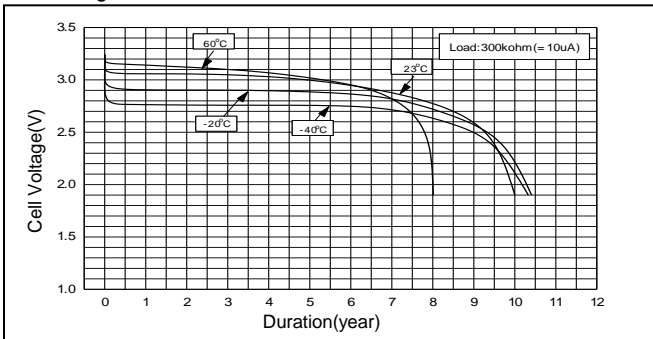
Discharge Characteristics of CR14250SE



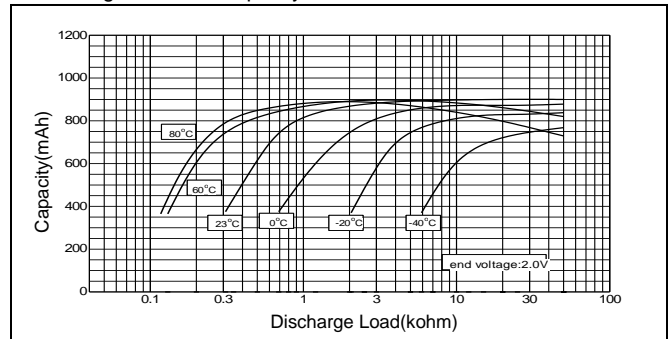
Discharge Characteristics of CR14250SE



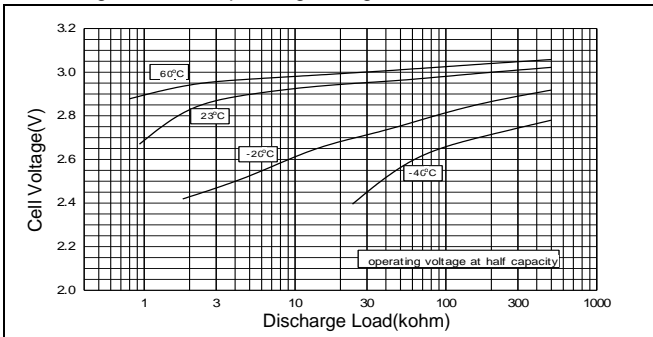
Discharge Characteristics of CR14250SE



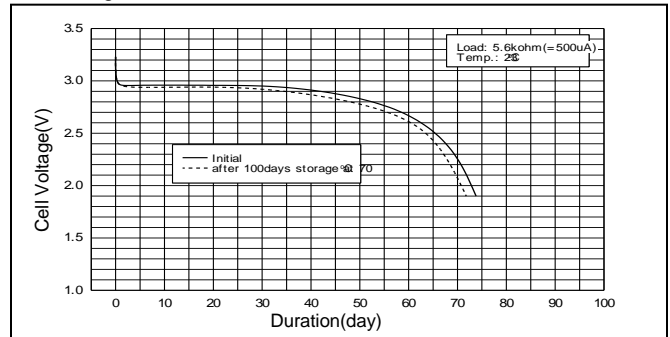
Discharge Load vs. Capacity of CR14250SE



Discharge Load vs. Operating Voltage of CR14250SE



Discharge Characteristics of CR14250SE



Date

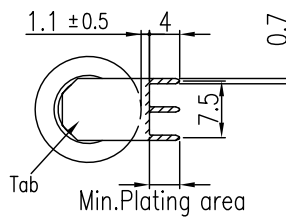
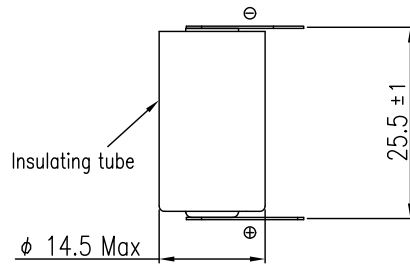
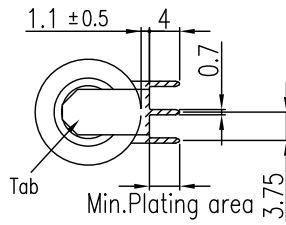
2010 - 3 - 19

Drawing No

D-CR14250SEFT1-E

Shape and Dimension

TENTATIVE



Tab material : Plated stainless steel
 Tab thickness : 0.3mm
 Welding strength of tab : Min.19.6N
 (Vertical direction from welding plate)

Unit : mm

Model

CR14250SE-FT1

FDK CORPORATION
 FDK TOTTORI CO., LTD. Business Development Department

Do not Scale Drawing